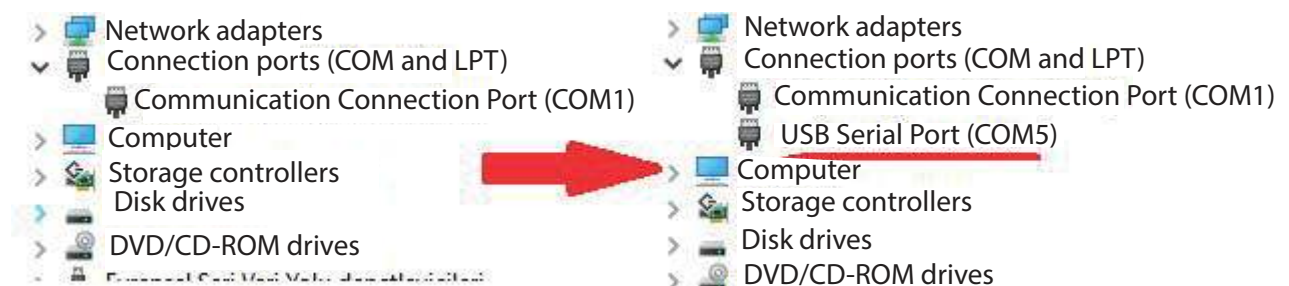
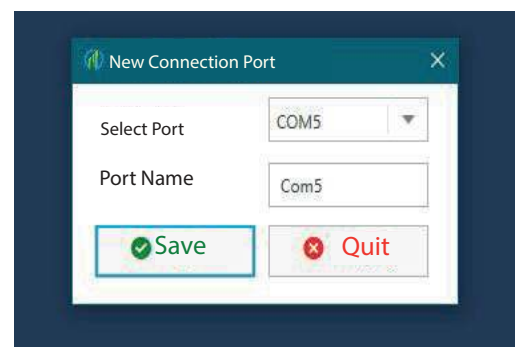
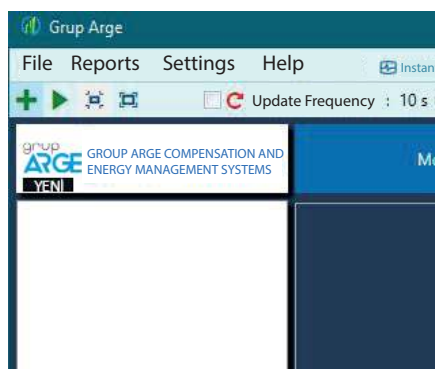


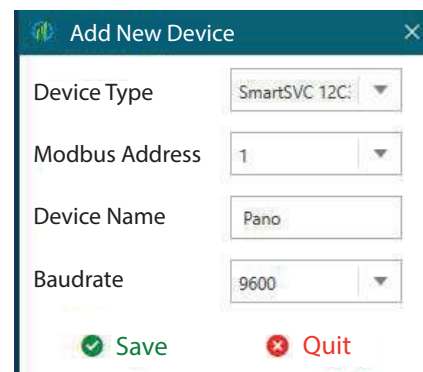
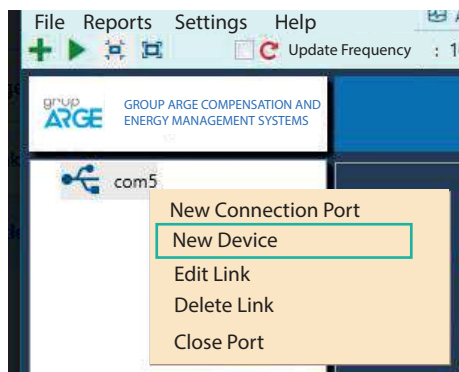
1 - The RS-485 outputs of the device to be measured are connected to the USB-RS-485 converter and plugs into the computer's USB port. Checked from device manager.



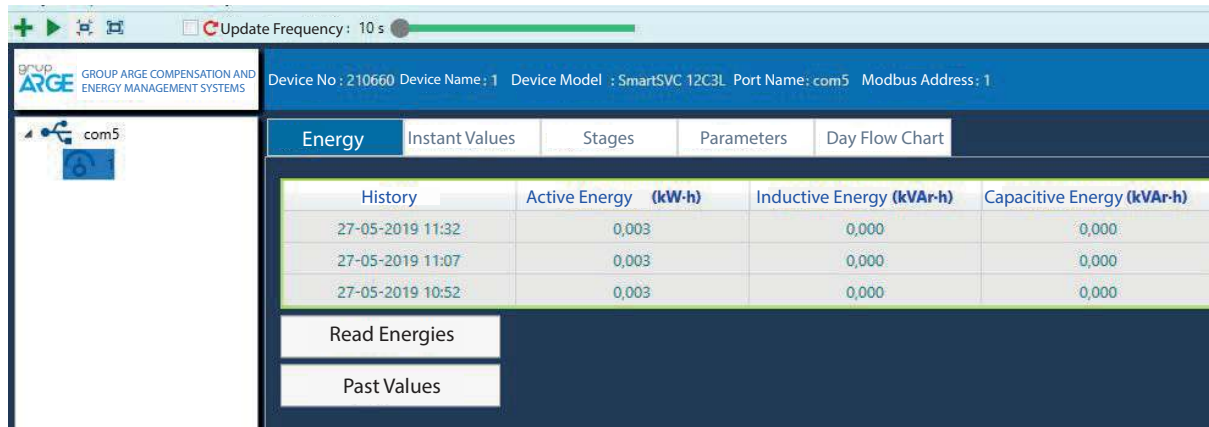
2 - The port opened by the connected RS-485 converter on the computer is selected with the "New" button at the top left.



3 - Right click on the added port, With New Device, Device information are filled.



4 - The software will start automatic measurements after a while. By clicking on the device on the left, device-specific tabs and measured data can be viewed.



5 - when the device is selected consumption data can be seen from the Reports menu . Time Range should be selected in the window that opens.

